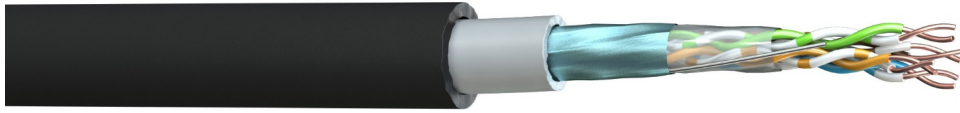


**Part No:** C5EFD-F00  
**Description:** The TruLan Cat 5E F/UTP cable is the ideal choice for high speed data networks and is suitable for external applications and running through ducting due to its heavy PE outer sheath.

**TESTED TO  
350MHz**



### Construction

**Conductor** : Bare Copper  
**AWG** : 24(1)  
**Insulation Material** : High Density Polyethylene (HDPE)  
**Number of Pairs** : 4  
**Pair Identification** : White/Blue, Blue/White; White/Orange, Orange/White  
 : White/Green, Green/White; White/Brown, Brown/White  
**Drain Wire** : 24(1)AWG Tinned Copper  
**Overall Screen** : Aluminium Foil (100% Coverage)  
**Inner Sheath Material** : Polyvinyl Chloride (PVC)  
**Inner Sheath Colour** : Grey  
**Outer Sheath Material** : Polyethylene (PE)  
**Outer Sheath Colour** : Black



### Electrical Characteristics

**Max. Conductor Resistance @ 20°C** : ≤ 9.5 Ω/100m  
**Max. Resistance Unbalanced** : ≤ 2.5 %  
**Nominal Impedance (1-100MHz)** : 100 ± 15 Ω  
**Mutual Capacitance** : ≤ 5.6nF/100m  
**Capacitance Unbalanced to Earth** : ≤ 330 pF/ 100m  
**NVP** : 68.5 %  
**Max. Delay Skew** : ≤ 45 nS/ 100m  
**Voltage Rating EN 50525-1** : 450/750V\*  
**Test Voltage** : 2.5kV (AC)  
 \*Suitable for installation where Band II 450/750v cables are present. Not suitable for connection to mains supply

### Physical Characteristics

**Overall Diameter** : 8.6 ± 0.3mm  
**Bend Radius** : Fixed 4 x OD                      Flexing 8 x OD  
**Temperature Rating** : Fixed -20°C to 60°C      Flexing -10°C to 60°C  
**Weight** : 86 kg/km

### Transmission Performance

Frequency	1	4	10	16	20	31.25	62.5	100	155	200	300	350	MHz
Attenuation	2.1	3.90	6.2	7.90	8.9	11.2	16.2	21.0	26.6	30.7	38.7	41.4	≤ dB
Return Loss	19.0	19.0	19.0	19.0	19.0	17.1	14.1	12.0	10.1	9.0	7.2	6.6	≥ dB
NEXT	60.0	54.8	48.5	45.2	43.7	40.5	35.7	32.3	29.2	27.3	24.4	23.2	≥ dB
PS NEXT	57.0	51.8	45.5	42.2	40.7	37.5	32.7	29.3	27.0	25.2	22.3	21.2	≥ dB
ACRF	58.6	46.6	38.6	34.5	32.6	28.7	22.7	18.6	17.5	15.3	11.8	10.5	≥ dB
PSACRF	55.6	43.6	35.6	31.5	29.6	25.7	19.7	15.6	11.8	9.6	6.1	4.7	≥ dB

### Standards

RoHS3 Compliance	: Yes	UV & Weather Resistance	: ISO 4892-3
CE Compliant	: LVD (2014/35/EU)	CPR Classification	: Fca (EN50575:2014+A1:2016)
Manufactured in accordance to	: TIA/EIA 568-C.2, ISO/IEC 11801		