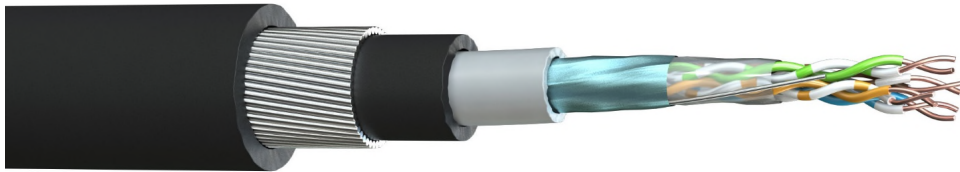


Part No: C5EFA-F00
Description: The TruLan Cat 5E F/UTP armoured cable is the ideal choice for high speed data networks and is suitable for external applications and running through ducting or directly burying.

**TESTED TO
350MHz**



Construction

Conductor : Bare Copper
AWG : 24(1)
Insulation Material : High Density Polyethylene (HDPE)
Number of Pairs : 4
Pair Identification : White/Blue, Blue/White; White/Orange, Orange/White
 : White/Green, Green/White; White/Brown, Brown/White
Drain Wire : 24(1)AWG Tinned Copper
Overall Screen : Aluminium Foil (100% Coverage)
1st Inner Sheath Material : Polyvinyl Chloride (PVC)
1st Inner Sheath Colour : Grey
2nd Inner Sheath Material : Polyethylene (PE)
2nd Inner Sheath Material : Black
Armour : Galvanised Steel Wire Armour (SWA)
Outer Sheath Material : Polyethylene (PE)
Outer Sheath Colour : Black



Electrical Characteristics

Max. Conductor Resistance @ 20°C : ≤ 9.5 Ω/100m
Max. Resistance Unbalanced : ≤ 2.5 %
Nominal Impedance (1-100MHz) : 100 ± 15 Ω
Mutual Capacitance : ≤ 5.6nF/100m
Capacitance Unbalanced to Earth : ≤ 330 pF/ 100m
NVP : 68.5 %
Max. Delay Skew : ≤ 45 nS/ 100m
Voltage Rating EN 50525-1 : 450/750V*
Test Voltage : 2.5kV (AC)

*Suitable for installation where Band II 450/750v cables are present. Not suitable for connection to mains supply

Physical Characteristics

Overall Diameter : 14.8 ± 0.5mm
Bend Radius : Fixed 4 x OD Flexing 8 x OD
Temperature Rating : Fixed -20°C to 60°C Flexing -10°C to 60°C
Weight : 275 kg/km

Transmission Performance

| Frequency | 1 | 4 | 10 | 16 | 20 | 31.25 | 62.5 | 100 | 155 | 200 | 300 | 350 | MHz |
|-------------|------|------|------|------|------|-------|------|------|------|------|------|------|------|
| Attenuation | 2.1 | 3.90 | 6.2 | 7.90 | 8.9 | 11.2 | 16.2 | 21.0 | 26.6 | 30.7 | 38.7 | 41.4 | ≤ dB |
| Return Loss | 19.0 | 19.0 | 19.0 | 19.0 | 19.0 | 17.1 | 14.1 | 12.0 | 10.1 | 9.0 | 7.2 | 6.6 | ≥ dB |
| NEXT | 60.0 | 54.8 | 48.5 | 45.2 | 43.7 | 40.5 | 35.7 | 32.3 | 29.2 | 27.3 | 24.4 | 23.2 | ≥ dB |
| PS NEXT | 57.0 | 51.8 | 45.5 | 42.2 | 40.7 | 37.5 | 32.7 | 29.3 | 27.0 | 25.2 | 22.3 | 21.2 | ≥ dB |
| ACRF | 58.6 | 46.6 | 38.6 | 34.5 | 32.6 | 28.7 | 22.7 | 18.6 | 17.5 | 15.3 | 11.8 | 10.5 | ≥ dB |
| PSACRF | 55.6 | 43.6 | 35.6 | 31.5 | 29.6 | 25.7 | 19.7 | 15.6 | 11.8 | 9.6 | 6.1 | 4.7 | ≥ dB |

Standards

RoHS3 Compliance : Yes
CE Compliant : LVD (2014/35/EU)
Manufactured in accordance to : TIA/EIA 568-C.2, ISO/IEC 11801
UV & Weather Resistance : ISO 4892-3
CPR Classification : Fca (EN50575:2014+A1:2016)

FS Cables Ltd
Export Sales

01727 840 841
+44 1727 849 841

sales@fscables.com
sales@fscglobal.com

www.fscables.com
www.fscglobal.com

Part Number: C5EFA-F00
Date: 08/01/2020
Revision: 1.4
Author: GB
Checked: GB
Page Number: 1 of 1

Information and images on this technical datasheet are intended for guidance only and products may vary due to manufacturing changes, technical improvements and commercial factors. We reserve the right to amend the product information without notice or liability.