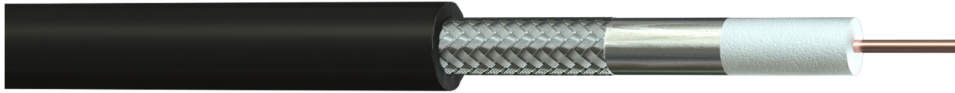


**Part No:** 390L24-F00  
**Description:** ANT-240 50 Ohm Antennax Polyethylene (PE) Black Coaxial Cable



### Construction

Conductor Material : Solid Bare Copper  
 Conductor Size : 1/1.42 mm  
 Dielectric : Foam Polyethylene (FPE)  
 Diameter of Dielectric : 3.81 mm  
 1<sup>st</sup> Screen Material : Bonded Aluminium Foil  
 2<sup>nd</sup> Screen Material : Tinned Copper Wire Braid (>90% Coverage)  
 Outer Sheath Material : Polyethylene (PE)  
 Outer Sheath Colour : Black



### Electrical Characteristics

Impedance : 50 Ω ± 2  
 Capacitance @ 1 kHz : 80 pF/m ± 5  
 Velocity of Propagation : 83 %  
 Conductor Resistance @ 20°C : ≤ 11.1 Ω /km  
 Screen Resistance @ 20°C : ≤ 12.8 Ω /km  
 Peak Power : 5.6 kW

### Attenuation @ 20°C

Frequency (MHz)	Attenuation (dB/100ft)	Attenuation (dB/100m)	Frequency (MHz)	Attenuation (dB/100ft)	Attenuation (dB/100m)
30	1.5	4.9	1500	9.7	31.8
50	1.8	6.0	1800	10.7	35.0
150	2.9	9.6	2000	11.3	37.0
220	3.5	11.5	2500	12.7	41.8
450	5.1	16.8	5800	20.0	65.5
900	7.4	24.3			

### Return Loss @ 20°C

Frequency (MHz)	Return Loss (dB)
30-3000MHz	≥ 15

### Physical Characteristics

Overall Diameter : 6.1 mm (±0.15mm)  
 Bending Radius : 5 x OD  
 Temperature Rating : -40°C to +75°C  
 Weight : 50 kg/km

### Standards

RoHS3 Compliant : Yes  
 UV & Weather Resistant : ISO 4892-3  
 CE Compliant : CPR (305/2011)  
 CPR Classification : Fca (EN50575:2014+A1:2016)