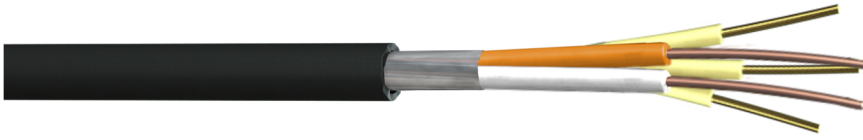


**Part No:** 37801  
**Description:** CW1415 Dropwire 11, One Pair 0.5mm External Polyethylene (PE) Black Sheath



### Construction

Conductor Material	: Plain Annealed Bare Copper
Conductor Size	: 0.50mm, Solid
Insulation Material	: Solid High Density Polyethylene (HDPE)
Number of Pairs	: 1
Insulation Colours	: White/Orange
Overall Tape	: Polyester
Support Strand	: 3 x Brass Plated Steel, 0.25mm, PVC Insulated
Ripcord	: Nylon
Sheath Material	: Medium Density Polyethylene (MDPE)
Sheath Colour	: Black

### Electrical Characteristics

Nominal Conductor Resistance @20°C	: < 95 Ω/km
Maximum Mutual Capacitance @ 20°C	: < 56 nF/km
Maximum Capacitance Unbalance @ 20°C	: 275 pF/500m
Maximum Insulation Resistance @ 20°C	: 10000 MΩ/km
Minimum Breaking Load	: 1350 Newtons
Maximum Breaking Load	: 1550 Newtons

### Physical Characteristics

Overall Diameter	: 5.3 ± 0.3mm
Weight	: 29 kg/km

### Standards

Manufactured to	: CW1415
RoHS3 Compliant	: Yes