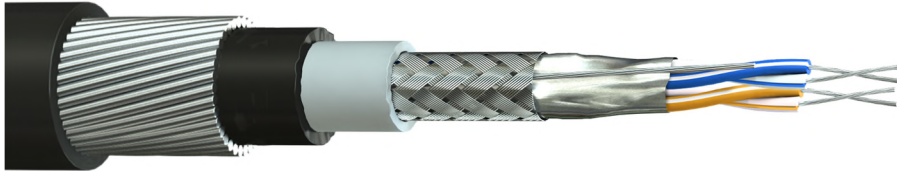


**Part Number:** 2402POHPA-F00  
**Description:** 2 x 2 x 24(7)AWG Two Pair Foil & Braid Screened Armoured Direct Burial Data Cable



### Construction

Conductor Material	: Tinned Copper, 24(7)awg
Insulation Material	: Polyethylene (PE)
Number of Pairs	: 2
Overall Screen 1	: Aluminium Foil (100% Coverage)
Drain Wire	: Tinned Copper, 24(7)awg
Overall Screen 2	: Tinned Copper Wire Braid (90% Coverage)
1 <sup>st</sup> Inner Sheath Material	: Low Smoke & Fume (LSF)
1 <sup>st</sup> Inner Sheath Colour	: Grey
2 <sup>nd</sup> Inner Sheath Material	: Polyethylene (PE)
2 <sup>nd</sup> Inner Sheath Colour	: Black
Armour	: Galvanised Steel Wire Armour (SWA)
Outer Sheath Material	: Polyethylene (PE)
Outer Sheath Colour	: Black
Core Identification	: White/Blue Stripe, Blue/White Stripe White/Orange Stripe, Orange/White Stripe
Alternative to Belden	: 9842, Armoured



### Electrical Characteristics

Nominal Conductor Resistance	: < 86.2 Ω/km
Insulation Resistance	: > 200MΩ.M
Impedance	: 120 Ohm ± 25
Capacitance	Core to Core : 42 pF/m ± 20
	Core to Screen : 76 pF/m ± 35
Voltage Rating	: 450/750V <i>Applies to CE marked FSC branded stock only</i>
Test Voltage	: 2.5kV for 5 minutes

### Physical Characteristics

Overall Diameter	: 16.1 ± 0.4mm
Min. Bend Radius	: 10 x OD
Temperature Rating	: -20°C to +70°C
Weight	: 390 kg/km

### Standards

RoHS3 Compliant	: Yes
UV & Weather Resistant	: ISO 4892-3
CE Compliant	: LVD (2014/35/EU)
CPR Classification	: Fca (EN50575:2014+A1:2016)