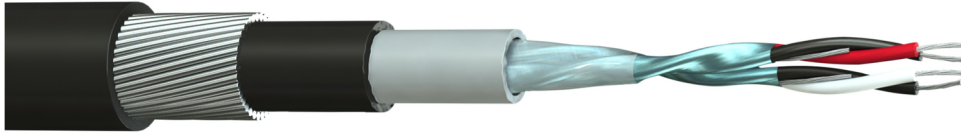


Part Number: 2402PIFFA-F00
Description: 2 x 2 x 24(7)AWG Two Pair Individually Foil Screened Armoured Direct Burial Data Cable



Construction

Conductor Material	: Tinned Copper, 24(7)awg
Insulation Material	: Foamed Polyethylene (FPE)
Number of Pairs	: 2
Individual Screen	: Aluminium Foil, Each Pair (100% Coverage)
Drain Wire	: Tinned Copper, 24(7)awg
1 st Inner Sheath Material	: Low Smoke & Fume (LSF)
1 st Inner Sheath Colour	: Grey
2 nd Inner Sheath Material	: Polyethylene (PE)
2 nd Inner Sheath Colour	: Black
Armour	: Galvanised Steel Wire Armour (SWA)
Outer Sheath Material	: Polyethylene (PE)
Outer Sheath Colour	: Black
Core Identification	: Black/Red, Black/White
Alternative to Belden	: 9729, Armoured



Electrical Characteristics

Nominal Conductor Resistance	: < 83.7 Ω/km
Insulation Resistance	: > 200MΩ.M
Impedance	: 100 Ohm ± 25
Capacitance	Core to Core : 40 pF/m ± 20
	Core to Screen : 76 pF/m ± 35
Voltage Rating	: 450/750V <i>Applies to CE marked FSC branded stock only</i>
Test Voltage	: 2.5kV for 5 minutes

Physical Characteristics

Overall Diameter	: 12.5 ± 0.4mm
Min. Bend Radius	: 10 x OD
Temperature Rating	: -20°C to +70°C
Weight	: 178 kg/km

Standards

RoHS3 Compliant	: Yes
UV & Weather Resistant	: ISO 4892-3
CE Compliant	: LVD (2014/35/EU)
CPR Classification	: Fca (EN50575:2014+A1:2016)