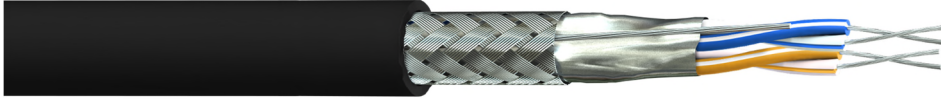


Part Number: 2202PODGH-E00
Description: 2 x 2 x 22(7)AWG Two Pair Foil & Braid Screened Low Smoke Halogen Free (LSHF) Data Cable



Construction

Conductor Material	: Tinned Copper, 22(7)awg
Insulation Material	: Foamed Polyethylene (FPE)
Number of Pairs	: 2
Overall Screen 1	: Aluminium Foil (100% Coverage)
Drain Wire	: Tinned Copper, 22(7)awg
Overall Screen 2	: Tinned Copper Wire Braid (65% Coverage)
Outer Sheath Material	: Low Smoke Halogen Free (LSHF)
Outer Sheath Colour	: Black
Core Identification	: White/Blue Stripe, Blue/White Stripe White/Orange Stripe, Orange/White Stripe
Alternative to Belden	: 3107A

Electrical Characteristics

Nominal Conductor Resistance	: < 56.4 Ω/km
Insulation Resistance	: > 200MΩ.M
Impedance	: 120 Ohm ± 10
Capacitance	Core to Core : 36 pF/m ± 20
	Core to Screen : 69 pF/m ± 35
Voltage Rating	: 450/750V <i>Applies to CE marked FSC branded stock only</i>
Test Voltage	: 2.5kV for 5 minutes

Physical Characteristics

Overall Diameter	: 9.0 ± 0.2mm
Min. Bend Radius	: 10 x OD
Temperature Rating	: -20°C to +70°C
Weight	: 110 kg/km

Standards

Flame Retardant	: BS EN 60332-1-2
Low Smoke Generation	: BS EN 61034-2
Halogen Gas Emission	: BS EN 60754-1&2
RoHS3 Compliant	: Yes
CE Compliant	: LVD (2014/35/EU), CPR (305/2011)
CPR Classification	: Eca (EN50575:2014+A1:2016)