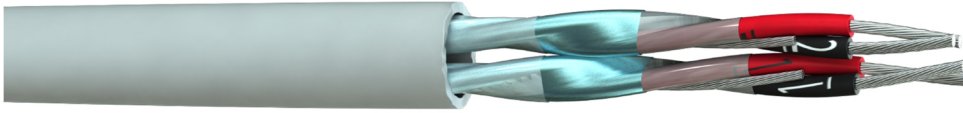


**Part Number:** 1802PIFYH-E00  
**Description:** 2 x 2 x 18(19)AWG Two Pair Individually Foil Screened Low Smoke Halogen Free (LSHF) Data Cable



### Construction

Conductor Material	: Tinned Copper, 18(19)awg
Insulation Material	: Low Smoke Halogen Free (LSHF)
Number of Pairs	: 2
Individual Screen	: Aluminium Foil, Each Pair (100% Coverage)
Drain Wire	: Tinned Copper, 20(19)awg
Outer Sheath Material	: Low Smoke Halogen Free (LSHF)
Outer Sheath Colour	: Grey
Core Identification	: Black/Red Numbered
Alternative to Belden	: 9368

### Electrical Characteristics

Nominal Conductor Resistance	: < 20.4 Ω/km
Insulation Resistance	: > 200MΩ.M
Capacitance	Core to Core : 187 pF/m ± 35
	Core to Screen : 335 pF/m ± 50
Voltage Rating	: 450/750V <i>Applies to CE marked FSC branded stock only</i>
Test Voltage	: 2.5kV for 5 minutes

### Physical Characteristics

Overall Diameter	: 9.6 ± 0.3mm
Min. Bend Radius	: 10 x OD
Temperature Rating	: -20°C to +70°C
Weight	: 103 kg/km

### Standards

Flame Retardant	: BS EN 60332-1-2
Low Smoke Generation	: BS EN 61034-2
Halogen Gas Emission	: BS EN 60754-1&2
RoHS3 Compliant	: Yes
CE Compliant	: LVD (2014/35/EU), CPR (305/2011)
CPR Classification	: Eca (EN50575:2014+A1:2016)