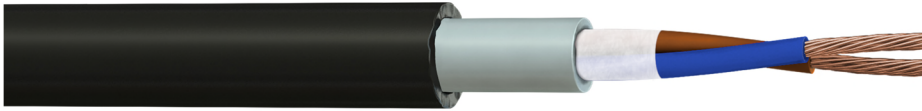


**Part Number:** 10002502D-F00

**Description:** Two core 2.5mm<sup>2</sup> outdoor duct grade control cable with a water blocking tape, PVC inner sheath and external PE outer sheath.



### Construction

Conductor Material	: Bare Copper
Conductor Size	: 2.5mm <sup>2</sup> , Class 5
Insulation Material	: Cross Linked Polyethylene (XLPE)
Number of Cores	: 2
Overall Tape	: Water Blocking Fleece
Inner Sheath Material	: Polyvinyl Chloride (PVC)
Inner Sheath Colour	: Grey
Outer Sheath Material	: Polyethylene (PE)
Outer Sheath Colour	: Black
Core Identification	: Brown, Blue

### Electrical Characteristics

Nominal Conductor Resistance	: < 7.98 Ω/km
Insulation Resistance	: > 200 MΩ.km
Voltage Rating	: 0.6/1kV
Test Voltage (Core to Core)	: 2kV for 5 minutes

### Physical Characteristics

Overall Diameter	: 11.0 ± 0.3mm
Min. Bend Radius	: 15 x OD
Temperature Rating	: -20°C to +70°C
Weight	: 152 kg/km

### Standards

RoHS3 Compliant	: Yes
UV & Weather Resistant	: ISO 4892-3
CE Compliant	: LVD (2014/35/EU), CPR (305/2011)
CPR Classification	: Fca (EN50575:2014+A1:2016)